

24-Port Gigabit IEEE 802.3at Power over Ethernet Injector Hub



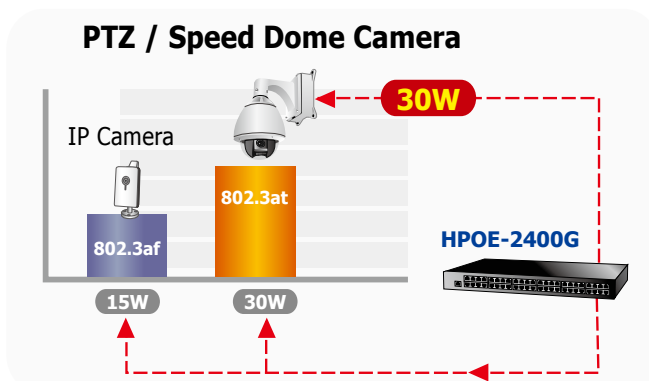
Highly cost-effective upgrade for HPOE-2400G – More PoE budget!!!

The HPOE-2400G, an IEEE 802.3at PoE+ Injector Hub, is compliant with any kind of Ethernet environments. It also can help to upgrade by supporting 30-watt Power over Ethernet without changing or swapping the existing switches or structures. Currently, the demand of IEEE 802.3at PoE+ devices is becoming more popular. Therefore, PLANET has improved the popular 24-port Gigabit PoE+ Injector Hub to support PoE budget up to 720-watt PoE output capability at a more affordable cost. This new change will make every PoE+ injector port totally support 30 watts of output.

PLANET HPOE-2400G, the 24-port Gigabit IEEE 802.3at High Power PoE Web Management Injector Hub, features both IEEE 802.3af and High Power IEEE 802.3at Power over Ethernet (PoE) that combines up to 30-watt power output and data per port over one CAT 5E/6 Ethernet cable. It is designed specifically to meet the growing demand of higher power consuming network PD (powered devices) such as PTZ (Pan, Tilt & Zoom) / speed dome network cameras, multi-channel (802.11a/b/g/n) wireless LAN access points and other network devices by providing double amount of PoE power than the conventional 802.3af PoE PSE.

IEEE 802.3at PoE Standard Compliance

The IEEE 802.3af Power over Ethernet Standard is becoming popular as the PoE demand for network-powered applications is increasing. With increasing critical applications, the demand for higher power is on the rise. Hence, the IEEE 802.3at High Power over Ethernet standard is defined to allow delivery of a maximum input power of 30 watts per PoE device. The IEEE 802.3at PoE standard is an ideal solution to meeting high power requirements directly via the RJ-45 interface. Compliant with IEEE 802.3at, the HPOE-2400G possesses stronger power capability than the existing 802.3af PoE PSE.



- 48-Port RJ-45
 - 24 -Port 10/100/1000Mbps “Data input”
 - 24 -Port 10/100/1000Mbps “Data + Power output”
- 1-Port 10/100Base-TX Management Port
- Reset button for system management

Power over Ethernet

- Complies with IEEE 802.3at and IEEE 802.3af Power over Ethernet Mid-Span PSE
- Up to 24 IEEE 802.3at / 802.3af devices powered
- 720-watt PoE Budget
- Supports PoE power up to 30.8 watts (802.3at PoE) / 15.4 watts (802.3af PoE) for each PoE port
- Automatically detects powered device (PD)
- Circuit protection prevents power interference between ports
- Remote power feeding up to 100m

PoE Management

- Total PoE power budget control
- Per port PoE power schedule
- Schedule power recycle
- PoE function enable / disable
- Per port PoE function enable / disable
- Per port 802.3at / 802.3af mode switch
- PoE port power feeding priority
- Per PoE port power limit
- PD classification detection
- PD alive check function
- Over temperature protection
- PoE temperature threshold
- PoE power usage threshold
-

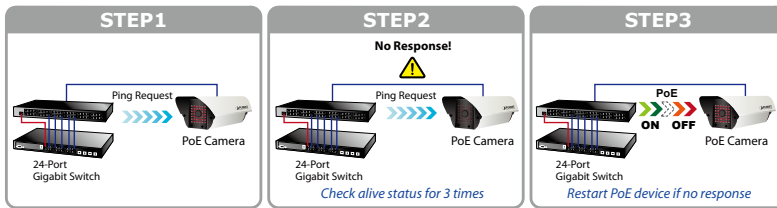
Management

- Web interface for remote management
- Supports Network Time Protocol (NTP)
- Firmware upgrade through Web interface
- PLANET Smart Discovery utility automatically finds PLANET devices on the network
- SNMP Trap for alarm notification of events
- System Log / Remote Syslog

Intelligent Powered Device Alive Check

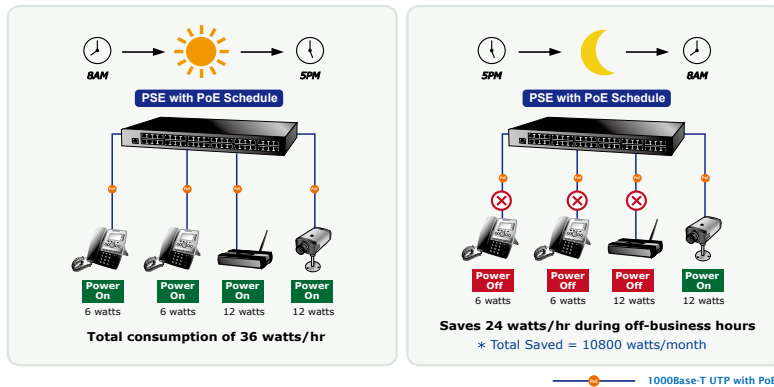
PLANET R&D team is here to improve and create new Managed PoE products, adopting not only Power over Ethernet technology, but also automated PD (powered device) monitoring and real-time PoE status. The HPOE-2400G can be configured to monitor connected PD status in real-time via ping action. Once the PD stops working and responding, the HPOE-2400G will recycle the PoE port power and bring the PD back to work. It will greatly enhance the network reliability through the PoE port resetting the PD's power source and reducing administrator management burden.

PoE PD Alive-checking



PoE Schedule for Energy Saving

Under the trend of energy saving worldwide and contributing to environment protection on the Earth, the HPOE-2400G can effectively control the power supply besides its capability of giving high watts power. The "PoE schedule" function helps you to enable or disable PoE power feeding for each PoE port during specified time intervals and it is a powerful function to help SMBs or enterprises save power and money.



Advanced Power Management

To facilitate the power management, the HPOE-2400G's powerful PoE management features include over temperature protection, usage threshold alert and auto power allocation to prevent power budget overloading. The PoE power budget can be allocated by priorities or classification and send alert event logs when power usage reaches the defined threshold. The HPOE-2400G enables centralization of the power supply and optimizes the installation and power management of remote network devices; therefore, it eliminates costs for additional AC wiring and reduces installation time.

Hardware

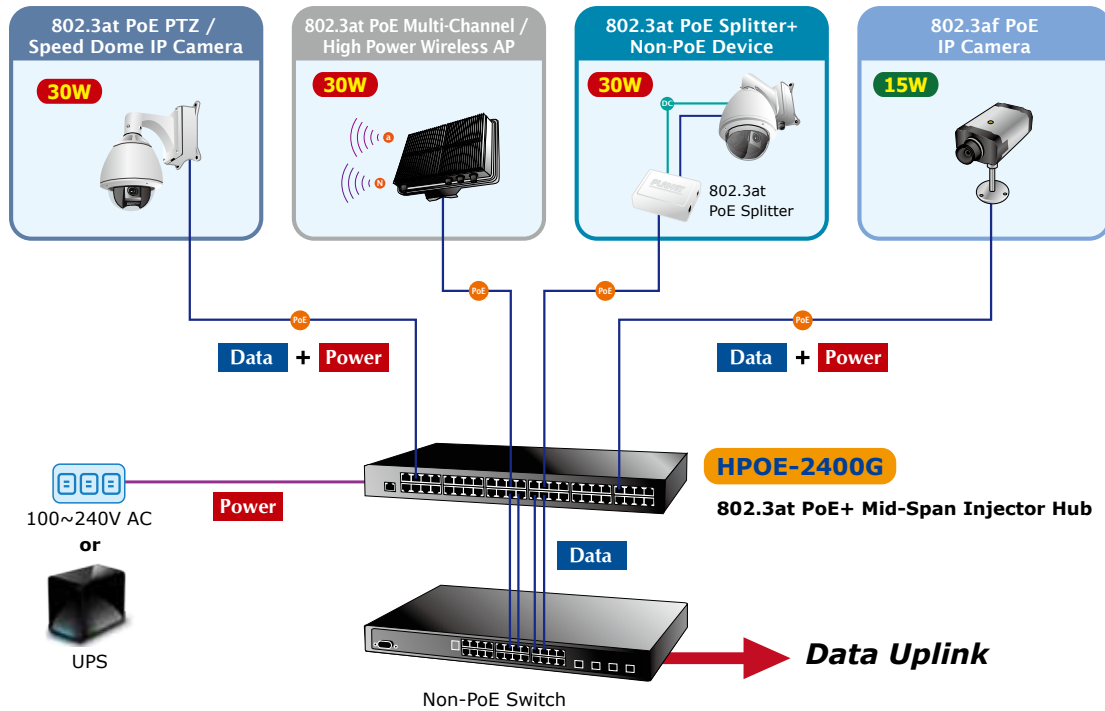
- 19-inch rack mountable; 1U height
- Reset button for reset to default setting and system reboot
- LED indicators for PoE ready and PoE activity
- LED indicators for power alert and fan alert
- FCC Part 15 Class A, CE

Standard Compliance

- IEEE 802.3 10Base-T
- IEEE 802.3u 100Base-TX
- IEEE 802.3ab 1000Base-T
- IEEE 802.3at High Power over Ethernet
- IEEE 802.3af Power over Ethernet
- RFC 768: UDP
- RFC 791: IP
- RFC 2068 HTTP
- RFC 1157: SNMPv1
- RFC 1902: SNMPv2c
- RFC 5424: Syslog

Quick and Easy PoE Network Deployment

The HPOE-2400G complies with IEEE 802.3, IEEE 802.3u, IEEE 802.3ab, IEEE 802.3af standards and IEEE 802.3at standard. With 24 10/100/1000Base-T Gigabit Ethernet ports, the HPOE-2400G supports 52V DC power for any remote 802.3af / 802.3at powered device (PD). Supporting 720 watts of PoE power budget, the HPOE-2400G provides sufficient 15.4-/30.8-watt PoE power up to 24 remote PD devices.

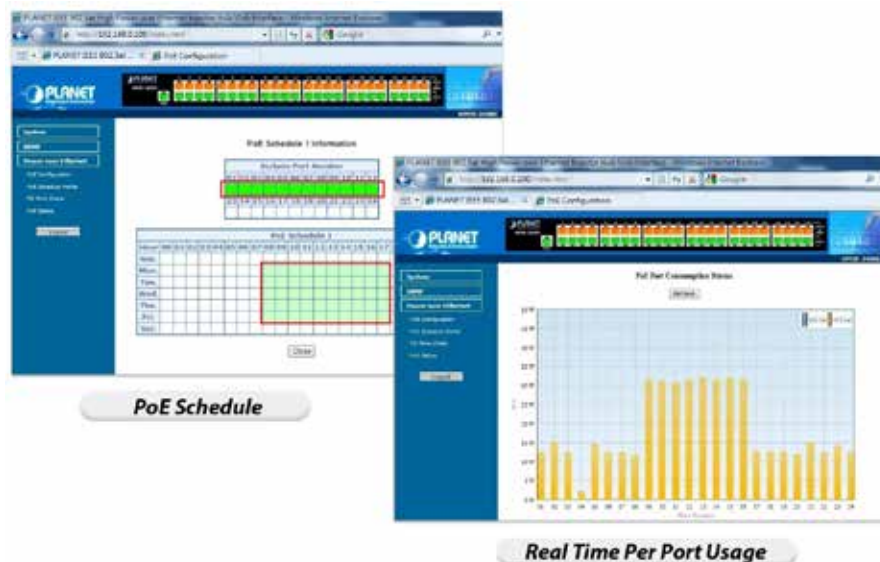


Easy Cabling Installation

The HPOE-2400G is installed between a regular Ethernet Switch and the powered devices; it injects power to the PDs without affecting data transmission performance. It offers a cost effective and quick solution to upgrading network system to IEEE 802.3af/IEEE 802.3at Power over Ethernet system without replacing the existing Ethernet Switch. There are 48 RJ-45 STP ports on the front panel of the POE-2400G, of which the 24 ports are on the lower stack function as "Data input" and the other 24 ports are on the upper stack function as "PoE (Data and Power) output". The 24 "PoE output" ports are also the power injectors that transmit DC voltage to the CAT 5/5e/6 cable and transfer data and power simultaneously between the Injectors and Splitters.

Friendly Web Management Interface

To efficiently manage the powered devices, the HPOE-2400G provides simple Web management interface in which administrators can control the functions including port Enable / Disable, port priority, system configuration, change of User Name/Password and smart features for powered devices. The PoE injector hub can automatically detect the power status of each port and show messages on its Web management interface. These features also provide users with a cost-effective way to manage the device via Internet whenever they are at work or at home.

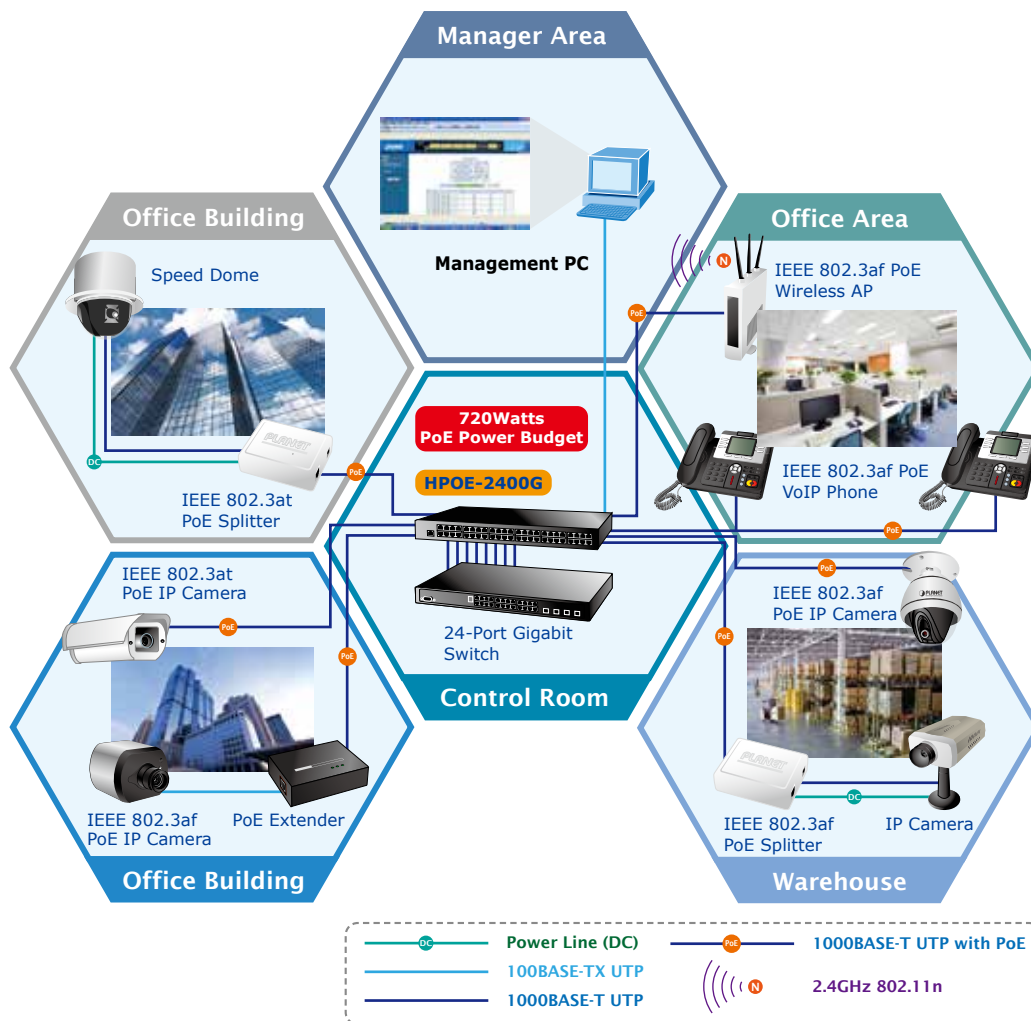


Applications

Gigabit PoE Network Deployment

The HPOE-2400G provides the easiest way to power your Ethernet devices such as IP camera on the ceiling and the wireless access point installed on the top of the building. With 24 10/100/1000Base-T Gigabit Ethernet ports, the HPOE-2400G supports full 52V DC power for any remote IEEE 802.3af / 802.3at powered device (PD).

To control the power system of your networking devices, the HPOE-2400G can directly co-work with PoE IP phone to build VoIP telephony network in the office. Furthermore, the HPOE-2400G can be directly connected to any third party IEEE 802.3af/802.3at compliant devices installed 100 meters away.



Specifications

Model	HPOE-2400G	
Hardware		
Interface	"Data" Input Ports	24 x RJ-45
	"Data+Power" Output Ports	24 x RJ-45
	Management Port	1 x RJ-45; 10/100Base-TX, auto-negotiation, auto-MDI / MDIX
Data Rate	10/100/1000Mbps	
LED	System: SYS power x 1 (green) Management port x 1: 10/100 (green/orange) Per PoE port: PoE in use x 1 (green) PoE1 Fail x 1 (green) PoE2 Fail x 1 (green) Fan1 Fail x 1 (green) Fan2 Fail x 1 (green)	
Network Cable	10Base-T: 4-pair UTP Cat. 5 up to 100m (328ft) 100Base-TX: 4-pair UTP Cat. 5 up to 100m (328ft) 1000Base-T: 4-pair UTP Cat. 5e, 6, up to 100m (328ft) EIA/TIA- 568 100-ohm STP (100m)	
Dimensions (W x D x H)	440 x 300 x 44 mm (1U height)	
Weight	4.76kg	
Power Requirement	100-240V AC, 50/60 Hz	
Power Consumption	800 watts (max.)	
Cooling	Fan x 3	
Power over Ethernet		
PoE Power Supply Type	Mid-Span	
PoE Power Output	Per port DC 52V 30.8/15.4 watts	
Power Pin Assignment	4/5(-), 7/8(+)	
PoE Power Budget	720 watts	
Number of 802.3af PD Class 0, 1, 2, 3 can be powered	24	
Number of 802.3at PD Class 1, 2, 3 can be powered	24	
Number of 802.3at PD Class 0, 4 can be powered	24	
Management		
Management Interface	Web, PLANET Smart Discovery Lite	
PoE Management	Power limit by consumption, classification and total limit PoE admin mode Per port power schedule Schedule power recycle Per port power enable/disable Power feeding priority Over temperature protection Temperature threshold PoE power budget usage threshold Current per port usage and status Total power consumption	
Management Feature	System/management functions setup Web firmware upgrade SNMP Trap for alarm notification of events	
Standards Conformance		
Standards Compliance	IEEE 802.3 10Base-T Ethernet IEEE 802.3u 100Base-TX Fast Ethernet IEEE 802.3ab 1000Base-T Gigabit Ethernet IEEE 802.3at High Power over Ethernet IEEE 802.3af Power over Ethernet RFC 768: UDP RFC 791: IP RFC 2068 HTTP RFC 1157: SNMPv1 RFC 1902: SNMPv2c RFC 5424: Syslog	
Regulation Compliance	FCC Part 15 Class A, CE	

Environment	
Operating Temperature	0 ~ 50 degrees C
Storage Temperature	-10 ~ 70 degrees C
Humidity	5 ~ 95% (non-condensing)

Ordering Information

HPOE-2400G	24-Port Gigabit IEEE 802.3at Power over Ethernet Injector Hub (720W)
------------	--

Related PoE Products

ICA-2200	Full HD PoE Box IP Camera
ICA-2500	5 Mega-Pixel PoE Box IP Camera
ICA-3250V	Full HD Outdoor IR PoE IP Camera
ICA-3350V	3 Mega-Pixel Vari-Focal Bullet IR IP Camera
ICA-4200V	Full HD 20M IR Vari-Focal Dome IP Camera
ICA-5350V	3 Mega-Pixel Vandalproof IR IP Camera
ICA-8350	3 Mega-Pixel Vandalproof Fisheye IP Camera
ICA-HM101	2 Mega-Pixel PoE Cube IP Camera
ICA-HM132	H.264 2 Mega-Pixel 20M IR Vari-Focal Dome IP Camera
ICA-HM136	H.264 2 Mega-Pixel 20M IR Vandalproof Dome IP Camera
ICA-HM312	2 Mega-Pixel 25M IR Outdoor Bullet PoE IP Camera
ICA-HM316	2 Mega-Pixel Outdoor IR PoE IP Camera
ICA-HM351	2 Mega-Pixel 35M IR Outdoor Box PoE IP Camera
ICA-HM620	2 Mega-Pixel PoE Plus Speed Dome Internet Camera
POE-162S	IEEE 802.3at Gigabit High Power over Ethernet Splitter
POE-E201	IEEE 802.3at Power over Ethernet Extender
WNAP-C3220	802.11n Wireless Ceiling Mount PoE Access Point
WNAP-1120PE	802.11n Wireless Access Point with PoE
ICF-1700	Touch Screen Internet Multimedia Phone
VIP-256PT	802.3af PoE SIP IP Phone
VIP-360PT	Business PoE IP Phone
VIP-361PE	Professional PoE IP Phone (5-Line)
VIP-560PT	Professional PoE IP Phone